

804 Series AWWA C515 Resilient Gate Valve, Push-On Ends

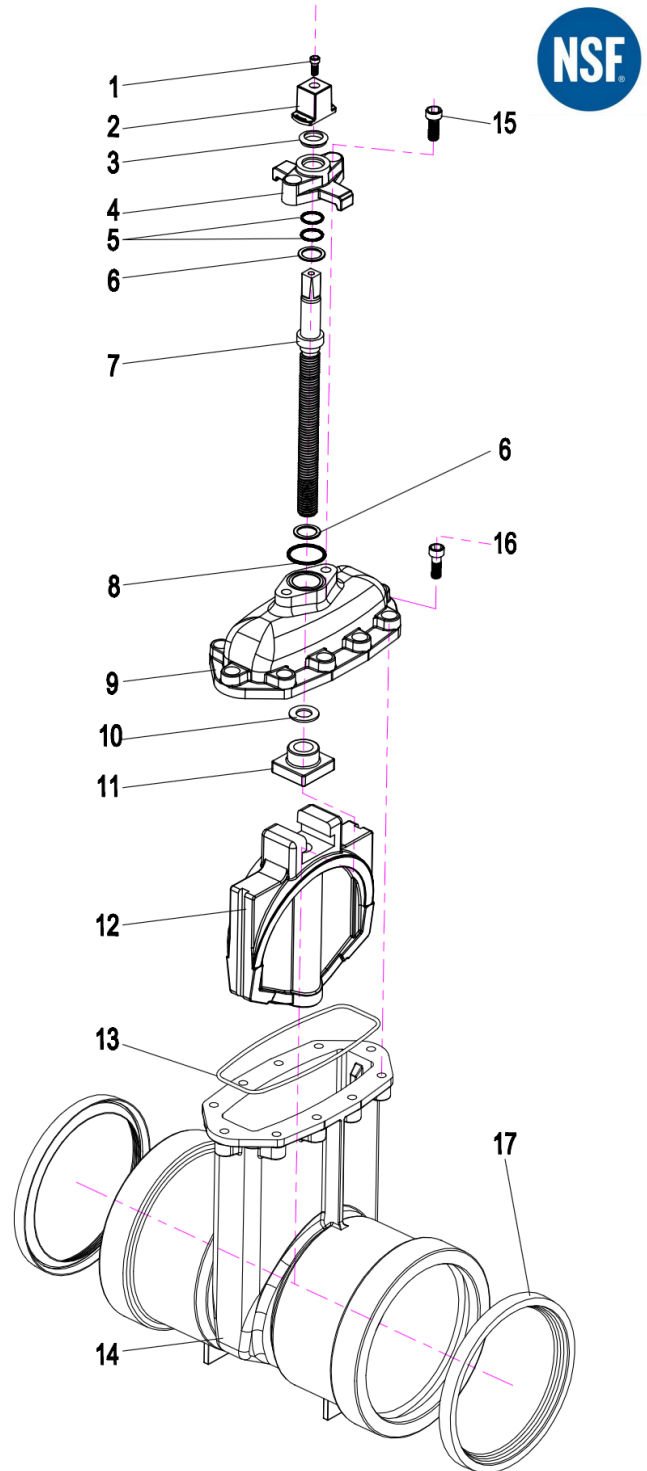


SPECIFICATIONS

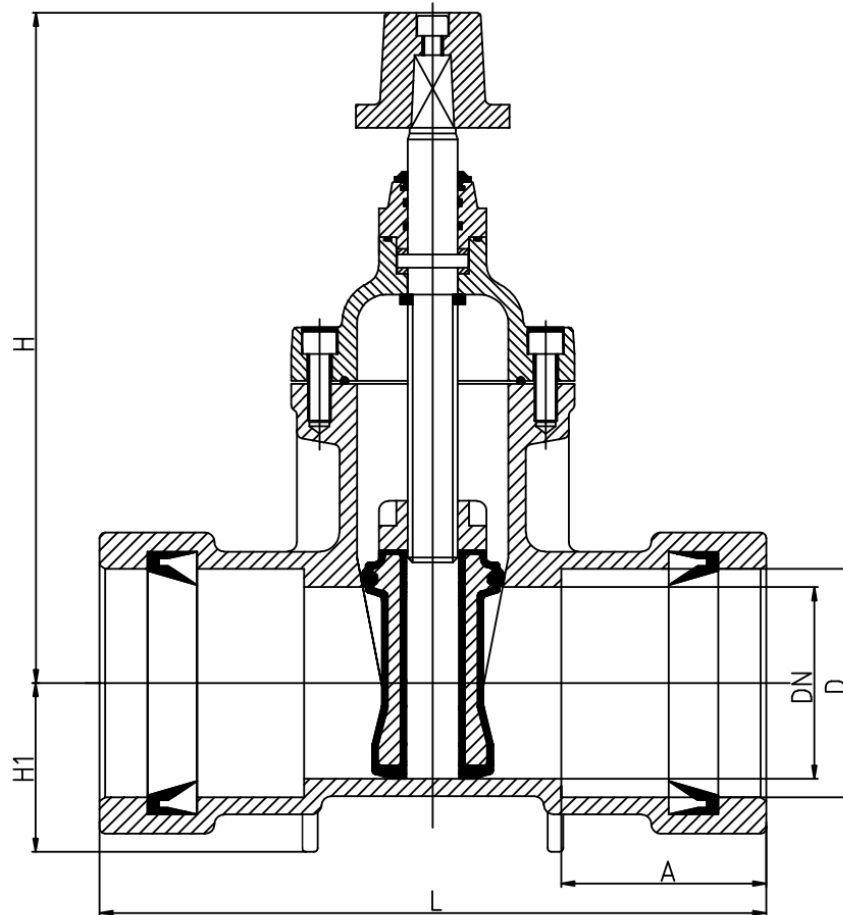
- DESIGNED AND TESTED ACCORDING TO AWWA C515 STANDARD
- NSF61/372 FOR SIZES 3"-12"
- RESILIENT SEATED, NON-RISING STEM
- GASKETED ENDS FITTED WITH NBR RUBBER SEALS, C111 STANDARD
- GASKETED ENDS FOR PVC (IPS) O.D. PIPE
- INTERIOR AND EXTERIOR FUSION BONDED EPOXY COATING, AWWA C550 STANDARD
- WORKING PRESSURE: 300 PSI
- WORKING TEMPERATURE: 10°F-230°F
- OPERATOR: 2" OPERATING NUT (HANDWHEEL OPTIONAL)

COMPONENTS

NO.	PART NAME	MATERIAL
1	TOP BOLTS	A2-70
2	OPERATING NUT	DUCTILE IRON ASTM A536
3	DUST CAP	RUBBER NBR
4	GLAND	DUCTILE IRON ASTM A536
5	O-RING	RUBBER NBR
6	STEM BUSHING	BRASS ASTM B124 C37700
7	STEM	STAINLESS STEEL AISI 304
8	O-RING	RUBBER NBR
9	BONNET	DUCTILE IRON ASTM A536
10	WEDGE NUT GASKET	RUBBER NBR
11	WEDGE NUT	BRASS
12	WEDGE	DUCTILE IRON NBR
13	BONNET GASKET	RUBBER NBR
14	BODY	DUCTILE IRON ASTM A536
15	GLAND BOLT	A2-70
16	BONNET BOLT	A2-70
17	RUBBER RING	RUBBER NBR



804 Series AWWA C515 Resilient Gate Valve, Push-On Ends



DIMENSIONS							(INCHES)	
SIZE	L	H	H1	D	A	URNS TO OPEN/CLOSE	MAX CLOSING TORQUE (FT-LBS)	
2"	10.24	12	2.56	2.46	3.43	7	44.25	
2 1/2"	10.75	12.40	2.95	2.97	3.54	8.5	55.32	
3"	12	13.62	3.15	3.62	4.01	10	55.32	
4"	13.70	15.55	3.54	4.67	4.21	13	73.76	
6"	16.85	20.47	4.53	6.81	5.71	18.5	110.63	
8"	18.50	23.43	6.10	9.17	6.57	24.5	147.51	
10"	21.26	28.35	7.28	10.90	6.69	30.5	184.39	
12"	26.46	31.38	8.27	12.91	8.98	36.5	221.27	