

## 811/811T Series Waterflow Detector

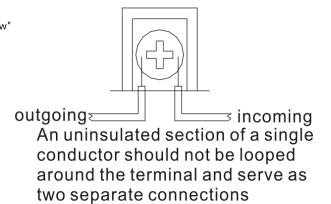
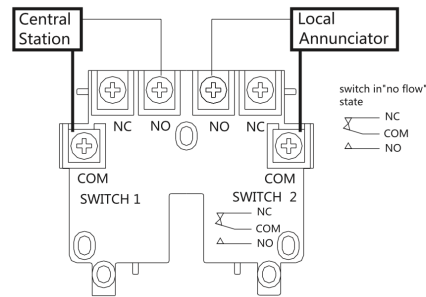
### SPECIFICATIONS

- EQUIPPED WITH TAMPER RESISTANT SCREWS TO PREVENT UNAUTHORIZED ENTRY
- TWO SYNCHRONIZED SWITCHES ARE ENCLOSED IN A DURABLE TERMINAL BLOCK. TERMINALS ARE EASY TO READ AND WIRE
- BUILT-IN MECHANICAL TIME DELAY FEATURE; MINIMIZING THE RISK OF FALSE ALARMS DUE TO PRESSURE SURGES OR AIR TRAPPED IN THE SYSTEM
- OFFERS EXCELLENT PERFORMANCE DURING RISER VIBRATIONS CAUSED BY LARGE IN-RUSHES OF WATER
- DESIGNED AND BUILT FOR ACCURACY AND REPEATABILITY
- FLOW SENSITIVITY RANGE  
UL/FM: 4-10 GPM (15-38 LPM)  
CE: 50-57L/MIN
- CONTACT RATING  
UL/FM: 8A AT 250VAC, 3A AT 24VDC, 2.5A AT 30VDC  
CE: 8A AT 125/250VAC, 3A AT 24VDC

### WORKING PRESSURE AND TEMPERATURE

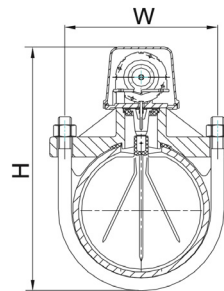
- UL/FM: 450PSI @ 32°F-154.4°F
- CE: 16BAR @ 32°F-154.4°F

### TYPICAL CONNECTIONS



### MATERIAL SPECIFICATIONS

SERIES	SADDLE	COVER
811	ALUMINUM B85 A04130	PC ALUMINUM B85 A04130

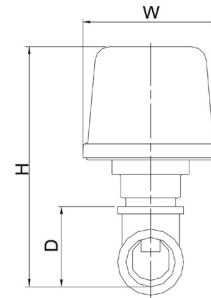


### DIMENSIONS

SIZE	2"	2.5"	3"	4"	5"	6"	8"	(INCHES)
W	3.31	3.62	4.09	5.24	6.30	7.36	9.41	
H	7.48	7.87	8.66	9.65	10.63	11.8	13.78	
NOMINAL PIPE SIZE OD.	2.37	2.87	3.50	4.50	5.56	6.63	8.63	
PIPE WALL THICKNESS	0.11-0.15	0.12-0.20	0.12-0.22	0.12-0.24	0.13-0.26	0.13-0.28	0.15-0.32	

### MATERIAL SPECIFICATIONS

SERIES	SADDLE	COVER
811T	BRONZE, B148 C95200	PC ALUMINUM B85 A04130



### DIMENSIONS

SIZE	1"	1 1/4"	1 1/2"	2"	(INCHES)
W	3.67	3.67	3.67	3.67	
H	6.46	6.79	7.05	7.56	
D (DEPTH)	2.12	2.46	2.71	3.22	