

837 Series Double Door Check Valve, UL Listed

SPECIFICATION

- SOFT SEATED FOR PERFECT TIGHTNESS EVEN AT LOW DIFFERENTIAL PRESSURE
- FLANGES TO ANSI B16.1 CLASS 125
- UL LISTED
- EXCELLENT FOR INSTALLATION IN TIGHT SPACES
- SPRING ASSISTED FOR BETTER PERFORMANCE

WORKING PRESSURE

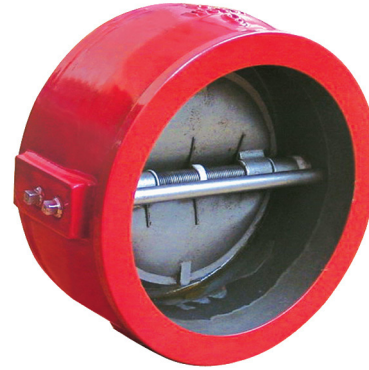
- 175 PSI

WORKING TEMPERATURE

- -10°C TO 82°C

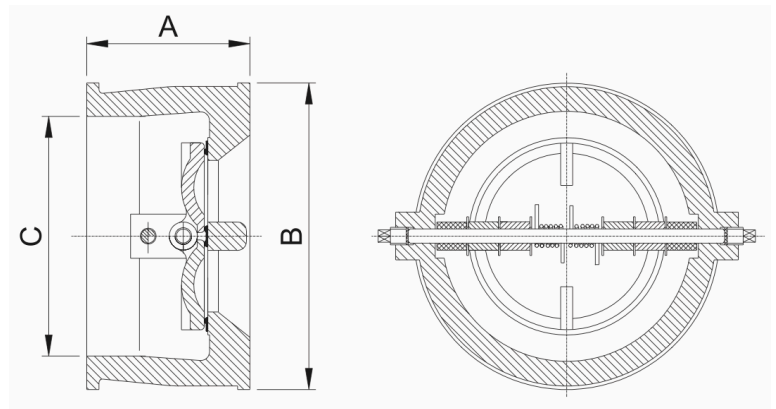
CORROSION PROTECTION

- FUSION BONDED EPOXY COATED INTERIOR AND EXTERIOR TO AWWA C550 STANDARD



COMPONENTS

PART NAME	MATERIAL
BODY	CAST IRON ASTM A126 CLASS B
STOP PIN	STAINLESS STEEL AISI 416
HINGE PIN	STAINLESS STEEL AISI 416
SEAT	EPDM
PIN RETAINER	STAINLESS STEEL AISI 416
GASKET	PTFE
WASHER	PTFE
SPACER	PTFE
DISC	STAINLESS STEEL ASTM CF8
SPRING	STAINLESS STEEL AISI 304
LIFTING HOOK	CARBON STEEL (NOT SHOWN. ONLY FOR 8", 10", 12")



DIMENSIONS

(INCHES)

SIZE	A	B	C	WEIGHT (KG)
4"	3-11/16	6-3/4	5-3/8	8.4
6"	4-1/8	8-11/16	7	13.5
8"	4-3/4	11	9-1/16	23
10"	6-1/16	13-3/8	11-1/4	42
12"	7-3/8	16-1/8	13-5/16	68